



COMMUNITY DEVELOPMENT UPDATE

MARKETING UPDATE

Happy 2022! We hope you and your families had a wonderful holiday season and are wishing you a prosperous New Year.

The real estate market continued to flourish in 2021 and it is certainly an exciting time to be living in Wendell Falls with all the growth happening in the community.

We had 223 new homes sold last year, and 247 families moved into the neighborhood, bringing the total number of occupied homes to over 1,270. We had several new awards added to our collection in 2021 and remain the #2 top-selling community in the Triangle, based on Metrostudy.

Treelight Square has really taken shape this past year, most notably with the opening of Publix and Brea Wendell Falls. We're working on new commercial deals and excited to share that with you as soon as they are finalized. Make sure you are following the [Treelight Square Facebook page](#) for the most updated commercial information.



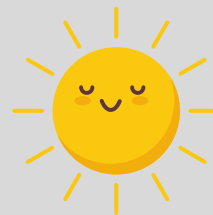
Wendell Falls had 223 new home sales in 2021

SUSTAINABILITY

When you live in Wendell Falls, you're helping the planet and your wallet. Here's how much we saved together in 2021:



Residents saved an estimated \$700,000 in combined energy savings during 2021



19 solar systems installed



Average HERS score = 61



2,100 gallons of water saved per home annually



3,700 pounds of carbon emissions avoided

*Southern Energy Management Report 4Q2021

CONSTRUCTION UPDATE

In 2021, a total of 514 new lots were delivered in new residential phases (Ph 7A - Encore, Ph 12, Ph 9B and 9C).

Lots of construction activity is happening in Ph 12, which is where the new model park will be located, along with the urban townhomes from Homes By Dickerson and Garman. Two new single-family model homes by Garman are complete and available to tour (Southern Comfort and Paper models). The McNeil Burbank model is scheduled to open in April.

You may have noticed our partner Nature Trails installing new sections of walking and biking trails, as well as rehabilitation of existing trails. This work will continue through spring. Additionally, they are working on trail signage to make the paths clearer.

Wendell Valley Boulevard was completed, opening up future residential to the north and commercial development in The Collective, including access for Wake Med. The Collective will bring a variety of medical, technical, and professional services to residents.

A map of the phases is included on the next page for your convenience. Residents can also access it any time at LifeAtWendellFalls.com.



Progress on Phase 12



Progress on The Collective, courtesy of Sanford Contractors

COMMERCIAL NEWS

Publix had its grand opening on December 1st. We recommend the chicken finger sub!

The Treelight Square dining district is progressing, and the first two buildings are anticipated to be complete this spring.

A drive-thru Starbucks was announced! [See the press release here for more information.](#)

The Treelight Square amenity, which will include a splash pad, has started construction and is expected to open this spring.



WENDELL FALLS WINS!

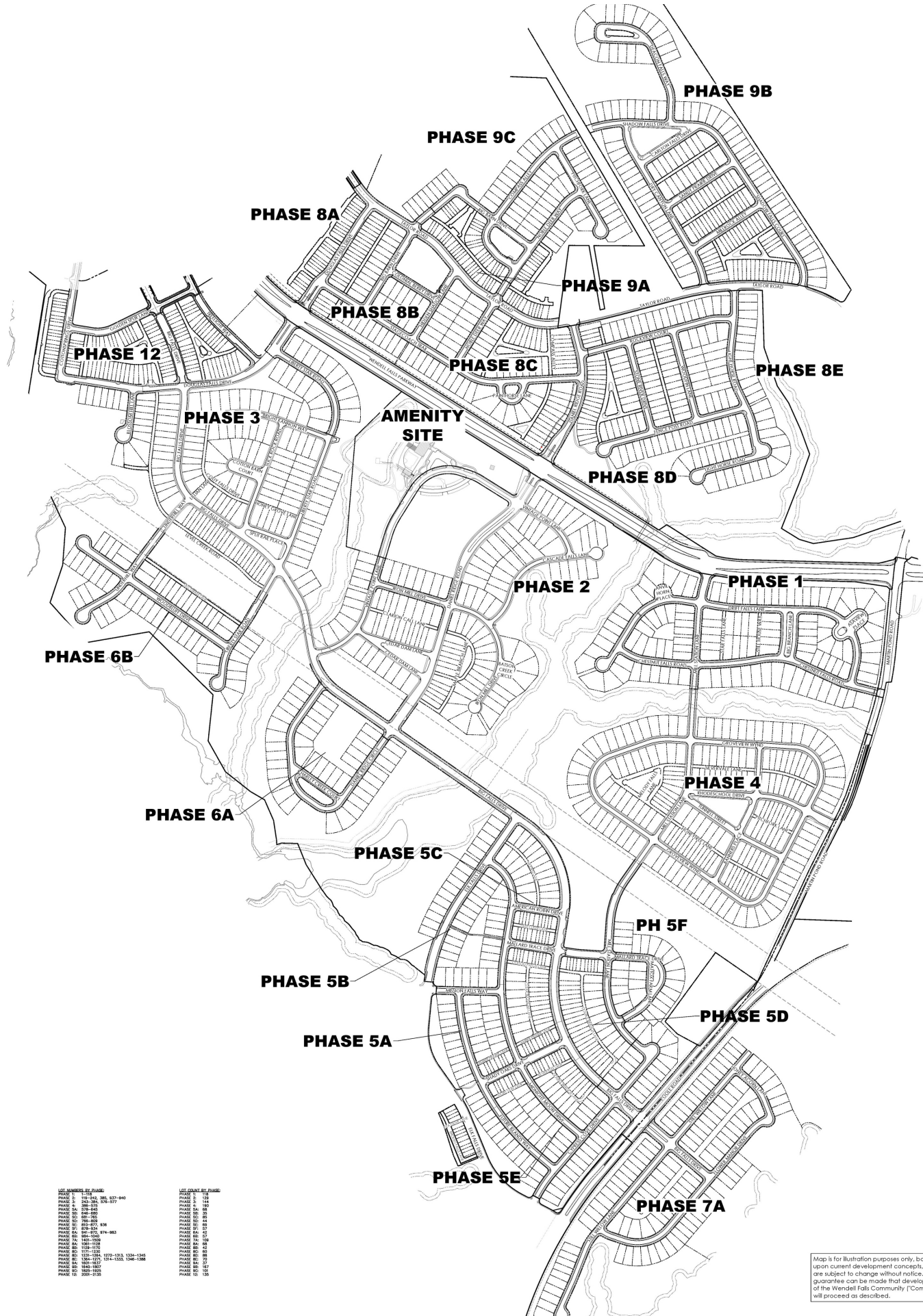
Wendell Falls won the Silver Award for Best New Home Community by Midtown Magazine. Thanks to everyone who voted!



Wendell Falls by Newland is owned in a joint venture partnership between North America Sekisui House, LLC (NASH) and Brookfield Residential, and is proudly managed by Brookfield Properties. These partners share a deep commitment to sustainable development practices and apply these core values to the vision, planning, and development of their communities. Wendell Falls by Newland is one of more than 20 communities this partnership manages together across the US. For more information, visit wendellfalls.com.

EQUAL HOUSING OPPORTUNITY. This is not intended to be an offer to sell nor a solicitation of offers to buy real estate in Wendell Falls to residents of Connecticut, Hawaii, Idaho, Illinois, New York, New Jersey, and Oregon, or in any other jurisdiction where prohibited by law. No guarantee can be made that development of the Wendell Falls Community ("Community") will proceed as described. Some properties being developed in the Community may only be in the formative stages and are not currently constructed, but are envisioned for the future. Any information on such properties is presented to set forth certain prospective developments for general informational purposes only. Newland Communities and North America Sekisui House (i) are not co-developing, co-building or otherwise responsible for any of the obligations or representations of any of the Builders, and (ii) shall have no obligations whatsoever to any buyer regarding a home purchase from a Builder. Buyers of homes from any of the Builders waive to the fullest extent permitted by law any and all claims against Newland Communities and/or North America Sekisui House arising out of their purchase transaction with a Builder. © 2022 Wendell Falls: LLC. All Rights Reserved.

COMMUNITY MAP BY PHASE



LOT NUMBERS BY PHASE	LOT COUNT BY PHASE
PHASE 1: 101-104, 201-204	PHASE 1: 118
PHASE 2: 215-242, 243-272	PHASE 2: 124
PHASE 3: 301-313	PHASE 3: 130
PHASE 4A: 401-402	PHASE 4A: 02
PHASE 4B: 403-404	PHASE 4B: 02
PHASE 4C: 405-406	PHASE 4C: 02
PHASE 4D: 407-408	PHASE 4D: 02
PHASE 4E: 409-410	PHASE 4E: 02
PHASE 4F: 411-412	PHASE 4F: 02
PHASE 4G: 413-414	PHASE 4G: 02
PHASE 4H: 415-416	PHASE 4H: 02
PHASE 4I: 417-418	PHASE 4I: 02
PHASE 4J: 419-420	PHASE 4J: 02
PHASE 4K: 421-422	PHASE 4K: 02
PHASE 4L: 423-424	PHASE 4L: 02
PHASE 4M: 425-426	PHASE 4M: 02
PHASE 4N: 427-428	PHASE 4N: 02
PHASE 4O: 429-430	PHASE 4O: 02
PHASE 4P: 431-432	PHASE 4P: 02
PHASE 4Q: 433-434	PHASE 4Q: 02
PHASE 4R: 435-436	PHASE 4R: 02
PHASE 4S: 437-438	PHASE 4S: 02
PHASE 4T: 439-440	PHASE 4T: 02
PHASE 4U: 441-442	PHASE 4U: 02
PHASE 4V: 443-444	PHASE 4V: 02
PHASE 4W: 445-446	PHASE 4W: 02
PHASE 4X: 447-448	PHASE 4X: 02
PHASE 4Y: 449-450	PHASE 4Y: 02
PHASE 4Z: 451-452	PHASE 4Z: 02
PHASE 5A: 501-502	PHASE 5A: 02
PHASE 5B: 503-504	PHASE 5B: 02
PHASE 5C: 505-506	PHASE 5C: 02
PHASE 5D: 507-508	PHASE 5D: 02
PHASE 5E: 509-510	PHASE 5E: 02
PHASE 5F: 511-512	PHASE 5F: 02
PHASE 5G: 513-514	PHASE 5G: 02
PHASE 5H: 515-516	PHASE 5H: 02
PHASE 5I: 517-518	PHASE 5I: 02
PHASE 5J: 519-520	PHASE 5J: 02
PHASE 5K: 521-522	PHASE 5K: 02
PHASE 5L: 523-524	PHASE 5L: 02
PHASE 5M: 525-526	PHASE 5M: 02
PHASE 5N: 527-528	PHASE 5N: 02
PHASE 5O: 529-530	PHASE 5O: 02
PHASE 5P: 531-532	PHASE 5P: 02
PHASE 5Q: 533-534	PHASE 5Q: 02
PHASE 5R: 535-536	PHASE 5R: 02
PHASE 5S: 537-538	PHASE 5S: 02
PHASE 5T: 539-540	PHASE 5T: 02
PHASE 5U: 541-542	PHASE 5U: 02
PHASE 5V: 543-544	PHASE 5V: 02
PHASE 5W: 545-546	PHASE 5W: 02
PHASE 5X: 547-548	PHASE 5X: 02
PHASE 5Y: 549-550	PHASE 5Y: 02
PHASE 5Z: 551-552	PHASE 5Z: 02
PHASE 6A: 601-602	PHASE 6A: 02
PHASE 6B: 603-604	PHASE 6B: 02
PHASE 6C: 605-606	PHASE 6C: 02
PHASE 6D: 607-608	PHASE 6D: 02
PHASE 6E: 609-610	PHASE 6E: 02
PHASE 6F: 611-612	PHASE 6F: 02
PHASE 6G: 613-614	PHASE 6G: 02
PHASE 6H: 615-616	PHASE 6H: 02
PHASE 6I: 617-618	PHASE 6I: 02
PHASE 6J: 619-620	PHASE 6J: 02
PHASE 6K: 621-622	PHASE 6K: 02
PHASE 6L: 623-624	PHASE 6L: 02
PHASE 6M: 625-626	PHASE 6M: 02
PHASE 6N: 627-628	PHASE 6N: 02
PHASE 6O: 629-630	PHASE 6O: 02
PHASE 6P: 631-632	PHASE 6P: 02
PHASE 6Q: 633-634	PHASE 6Q: 02
PHASE 6R: 635-636	PHASE 6R: 02
PHASE 6S: 637-638	PHASE 6S: 02
PHASE 6T: 639-640	PHASE 6T: 02
PHASE 6U: 641-642	PHASE 6U: 02
PHASE 6V: 643-644	PHASE 6V: 02
PHASE 6W: 645-646	PHASE 6W: 02
PHASE 6X: 647-648	PHASE 6X: 02
PHASE 6Y: 649-650	PHASE 6Y: 02
PHASE 6Z: 651-652	PHASE 6Z: 02
PHASE 7A: 701-702	PHASE 7A: 02
PHASE 7B: 703-704	PHASE 7B: 02
PHASE 7C: 705-706	PHASE 7C: 02
PHASE 7D: 707-708	PHASE 7D: 02
PHASE 7E: 709-710	PHASE 7E: 02
PHASE 7F: 711-712	PHASE 7F: 02
PHASE 7G: 713-714	PHASE 7G: 02
PHASE 7H: 715-716	PHASE 7H: 02
PHASE 7I: 717-718	PHASE 7I: 02
PHASE 7J: 719-720	PHASE 7J: 02
PHASE 7K: 721-722	PHASE 7K: 02
PHASE 7L: 723-724	PHASE 7L: 02
PHASE 7M: 725-726	PHASE 7M: 02
PHASE 7N: 727-728	PHASE 7N: 02
PHASE 7O: 729-730	PHASE 7O: 02
PHASE 7P: 731-732	PHASE 7P: 02
PHASE 7Q: 733-734	PHASE 7Q: 02
PHASE 7R: 735-736	PHASE 7R: 02
PHASE 7S: 737-738	PHASE 7S: 02
PHASE 7T: 739-740	PHASE 7T: 02
PHASE 7U: 741-742	PHASE 7U: 02
PHASE 7V: 743-744	PHASE 7V: 02
PHASE 7W: 745-746	PHASE 7W: 02
PHASE 7X: 747-748	PHASE 7X: 02
PHASE 7Y: 749-750	PHASE 7Y: 02
PHASE 7Z: 751-752	PHASE 7Z: 02
PHASE 8A: 801-802	PHASE 8A: 02
PHASE 8B: 803-804	PHASE 8B: 02
PHASE 8C: 805-806	PHASE 8C: 02
PHASE 8D: 807-808	PHASE 8D: 02
PHASE 8E: 809-810	PHASE 8E: 02
PHASE 8F: 811-812	PHASE 8F: 02
PHASE 8G: 813-814	PHASE 8G: 02
PHASE 8H: 815-816	PHASE 8H: 02
PHASE 8I: 817-818	PHASE 8I: 02
PHASE 8J: 819-820	PHASE 8J: 02
PHASE 8K: 821-822	PHASE 8K: 02
PHASE 8L: 823-824	PHASE 8L: 02
PHASE 8M: 825-826	PHASE 8M: 02
PHASE 8N: 827-828	PHASE 8N: 02
PHASE 8O: 829-830	PHASE 8O: 02
PHASE 8P: 831-832	PHASE 8P: 02
PHASE 8Q: 833-834	PHASE 8Q: 02
PHASE 8R: 835-836	PHASE 8R: 02
PHASE 8S: 837-838	PHASE 8S: 02
PHASE 8T: 839-840	PHASE 8T: 02
PHASE 8U: 841-842	PHASE 8U: 02
PHASE 8V: 843-844	PHASE 8V: 02
PHASE 8W: 845-846	PHASE 8W: 02
PHASE 8X: 847-848	PHASE 8X: 02
PHASE 8Y: 849-850	PHASE 8Y: 02
PHASE 8Z: 851-852	PHASE 8Z: 02
PHASE 9A: 901-902	PHASE 9A: 02
PHASE 9B: 903-904	PHASE 9B: 02
PHASE 9C: 905-906	PHASE 9C: 02
PHASE 9D: 907-908	PHASE 9D: 02
PHASE 9E: 909-910	PHASE 9E: 02
PHASE 9F: 911-912	PHASE 9F: 02
PHASE 9G: 913-914	PHASE 9G: 02
PHASE 9H: 915-916	PHASE 9H: 02
PHASE 9I: 917-918	PHASE 9I: 02
PHASE 9J: 919-920	PHASE 9J: 02
PHASE 9K: 921-922	PHASE 9K: 02
PHASE 9L: 923-924	PHASE 9L: 02
PHASE 9M: 925-926	PHASE 9M: 02
PHASE 9N: 927-928	PHASE 9N: 02
PHASE 9O: 929-930	PHASE 9O: 02
PHASE 9P: 931-932	PHASE 9P: 02
PHASE 9Q: 933-934	PHASE 9Q: 02
PHASE 9R: 935-936	PHASE 9R: 02
PHASE 9S: 937-938	PHASE 9S: 02
PHASE 9T: 939-940	PHASE 9T: 02
PHASE 9U: 941-942	PHASE 9U: 02
PHASE 9V: 943-944	PHASE 9V: 02
PHASE 9W: 945-946	PHASE 9W: 02
PHASE 9X: 947-948	PHASE 9X: 02
PHASE 9Y: 949-950	PHASE 9Y: 02
PHASE 9Z: 951-952	PHASE 9Z: 02
PHASE 10A: 1001-1002	PHASE 10A: 02
PHASE 10B: 1003-1004	PHASE 10B: 02
PHASE 10C: 1005-1006	PHASE 10C: 02
PHASE 10D: 1007-1008	PHASE 10D: 02
PHASE 10E: 1009-1010	PHASE 10E: 02
PHASE 10F: 1011-1012	PHASE 10F: 02
PHASE 10G: 1013-1014	PHASE 10G: 02
PHASE 10H: 1015-1016	PHASE 10H: 02
PHASE 10I: 1017-1018	PHASE 10I: 02
PHASE 10J: 1019-1020	PHASE 10J: 02
PHASE 10K: 1021-1022	PHASE 10K: 02
PHASE 10L: 1023-1024	PHASE 10L: 02
PHASE 10M: 1025-1026	PHASE 10M: 02
PHASE 10N: 1027-1028	PHASE 10N: 02
PHASE 10O: 1029-1030	PHASE 10O: 02
PHASE 10P: 1031-1032	PHASE 10P: 02
PHASE 10Q: 1033-1034	PHASE 10Q: 02
PHASE 10R: 1035-1036	PHASE 10R: 02
PHASE 10S: 1037-1038	PHASE 10S: 02
PHASE 10T: 1039-1040	PHASE 10T: 02
PHASE 10U: 1041-1042	PHASE 10U: 02
PHASE 10V: 1043-1044	PHASE 10V: 02
PHASE 10W: 1045-1046	PHASE 10W: 02
PHASE 10X: 1047-1048	PHASE 10X: 02
PHASE 10Y: 1049-1050	PHASE 10Y: 02
PHASE 10Z: 1051-1052	PHASE 10Z: 02
PHASE 11A: 1101-1102	PHASE 11A: 02
PHASE 11B: 1103-1104	PHASE 11B: 02
PHASE 11C: 1105-1106	PHASE 11C: 02
PHASE 11D: 1107-1108	PHASE 11D: 02
PHASE 11E: 1109-1110	PHASE 11E: 02
PHASE 11F: 1111-1112	PHASE 11F: 02
PHASE 11G: 1113-1114	PHASE 11G: 02
PHASE 11H: 1115-1116	PHASE 11H: 02
PHASE 11I: 1117-1118	PHASE 11I: 02
PHASE 11J: 1119-1120	PHASE 11J: 02
PHASE 11K: 1121-1122	PHASE 11K: 02
PHASE 11L: 1123-1124	PHASE 11L: 02
PHASE 11M: 1125-1126	PHASE 11M: 02
PHASE 11N: 1127-1128	PHASE 11N: 02
PHASE 11O: 1129-1130	PHASE 11O: 02
PHASE 11P: 1131-1132	PHASE 11P: 02
PHASE 11Q: 1133-1134	PHASE 11Q: 02
PHASE 11R: 1135-1136	PHASE 11R: 02
PHASE 11S: 1137-1138	PHASE 11S: 02
PHASE 11T: 1139-1140	PHASE 11T: 02
PHASE 11U: 1141-1142	PHASE 11U: 02
PHASE 11V: 1143-1144	PHASE 11V: 02
PHASE 11W: 1145-1146	PHASE 11W: 02
PHASE 11X: 1147-1148	PHASE 11X: 02
PHASE 11Y: 1149-1150	PHASE 11Y: 02
PHASE 11Z: 1151-1152	PHASE 11Z: 02
PHASE 12A: 1201-1202	PHASE 12A: 02
PHASE 12B: 1203-1204	PHASE 12B: 02
PHASE 12C: 1205-1206	PHASE 12C: 02
PHASE 12D: 1207-1208	PHASE 12D: 02
PHASE 12E: 1209-1210	PHASE 12E: 02
PHASE 12F: 1211-1212	PHASE 12F: 02
PHASE 12G: 1213-1214	PHASE 12G: 02
PHASE 12H: 1215-1216	PHASE 12H: 02
PHASE 12I: 1217-1218	PHASE 12I: 02
PHASE 12J: 1219-1220	PHASE 12J: 02
PHASE 12K: 1221-1222	PHASE 12K: 02
PHASE 12L: 1223-1224	PHASE 12L: 02
PHASE 12M: 1225-1226	PHASE 12M: 02
PHASE 12N: 1227-1228	PHASE 12N: 02
PHASE 12O: 1229-1230	PHASE 12O: 02
PHASE 12P: 1231-1232	PHASE 12P: 02
PHASE 12Q: 1233-1234	PHASE 12Q: 02
PHASE 12R: 1235-1236	PHASE 12R: 02
PHASE 12S: 1237-1238	PHASE 12S: 02
PHASE 12T: 1239-1240	PHASE 12T: 02
PHASE 12U: 1241-1242	PHASE 12U: 02
PHASE 12V: 1243-1244	PHASE 12V: 02
PHASE 12W: 1245-1246	PHASE 12W: 02
PHASE 12X: 1247-1248	PHASE 12X: 02
PHASE 12Y: 1249-1250	PHASE 12Y: 02
PHASE 12Z: 1251-1252	PHASE 12Z: 02

Map is for illustration purposes only, based upon current development concepts, which are subject to change without notice. No guarantee can be made that development of the Wendell Falls Community ("Community") will proceed as described.