



COMMUNITY DEVELOPMENT UPDATE

CONSTRUCTION UPDATE

Happy summer, Wendell Falls! It's hard to believe we are already halfway through the year.

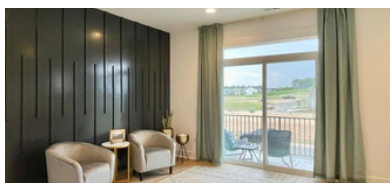
Homebuilding is well underway in Phases 9B, 9C, and 12. Lots of construction activity is happening in Ph 12, which is where the new model park is located, along with the brand new Onwordi townhome model from Garman Homes.

Phase 10B development is in progress with the first 119 single-family homesites being delivered to builders in fall 2022. Sitework on the remaining Phase 10 homesites is underway and expected to be delivered to builders in 2023.

We will be breaking ground on Phase 11 (138 lots) and Phase 7B (the remaining 70 Encore homesites) in August.

INTRODUCING THE ONWORDI!

The Onwordi Townhome model is officially open! This model is part of Garman Homes' Hero Townhome Collection, a continuation of the Hero Home Project and named in honor of our veterans. [To learn more about this story, click here.](#)



COMMERCIAL NEWS

You asked for pizza, and we delivered! Romeo's Pizza is joining the growing list of [dining and retail options](#) at Treelight Square. [Read more on our blog.](#)

Dental Care of Wendell Falls (Heartland Dental) is opening at the end of July. Make sure to [follow them on social media](#) for updates and announcements.

Construction on three of the Treelight Square buildings are now complete, and tenants have been working hard on upfits to have openings in early 2023. The splash pad has had some delays, but we are excited to showcase this new amenity at the Parade of Homes.

The first commercial lots for Collective will be delivered in fall 2022, lending itself to a mix of regional and local stores, restaurants and corporate headquarters.



Romeo's Pizza Joins Treelight Square!

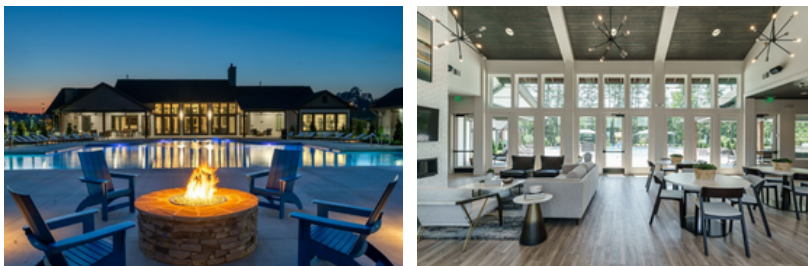


Progress on Phase 10 and The Collective (c/o Sanford Contractors)

MARKETING UPDATE

This year has been busier than ever with over 175 homes sold so far and about 138 closings, bringing the total number of occupied homes to 1,397*.

The Encore Clubhouse and pool are officially open! Residents of the 55+ neighborhood got to check out the new amenities, grab food, and jam out to live music at the grand opening event in June.



In June, the marketing team held a lifestyle photoshoot which featured real Wendell Falls residents! Be on the lookout for new photos and videos throughout our website and social media.

A special congrats to Myatt Landscaping, who was awarded the Robert B. McLeod Partners in Placemaking Award in May! Myatt's commitment to preserving the natural forestry and using organic products makes them the perfect partner for our sustainability mission, and they keep our community looking beautiful throughout the year. [To learn more, click here.](#)



Myatt Landscaping is honored with Partners in Placemaking Award



YOU'RE INVITED! FARMHOUSE JAMS FT. THE NIGEL EXPERIENCE



**SATURDAY, AUGUST 13TH
5PM - 8PM | LAKE PAVILION**

From R&B to rock, beach music to today's hits, we're saying goodbye to summer with another Farmhouse Jams concert!

Make sure to bring a lawn chair and come hungry—
Farmhouse Cafe and Friendly Tacos will have food and drinks available.

[TO RSVP OR LEARN MORE, CLICK HERE.](#)

WENDELL FALLS WINS!

The Wendell Falls Team was proud to take home five MAME (Major Achievements in Marketing Excellence) Awards this year!

Best Brochure
Best Use of Technology
Best Lifestyle Program
Best Community Recreation Facility
Developer of the Year

Congrats to our builder team who took home awards too!
[View the full list of winners here.](#)

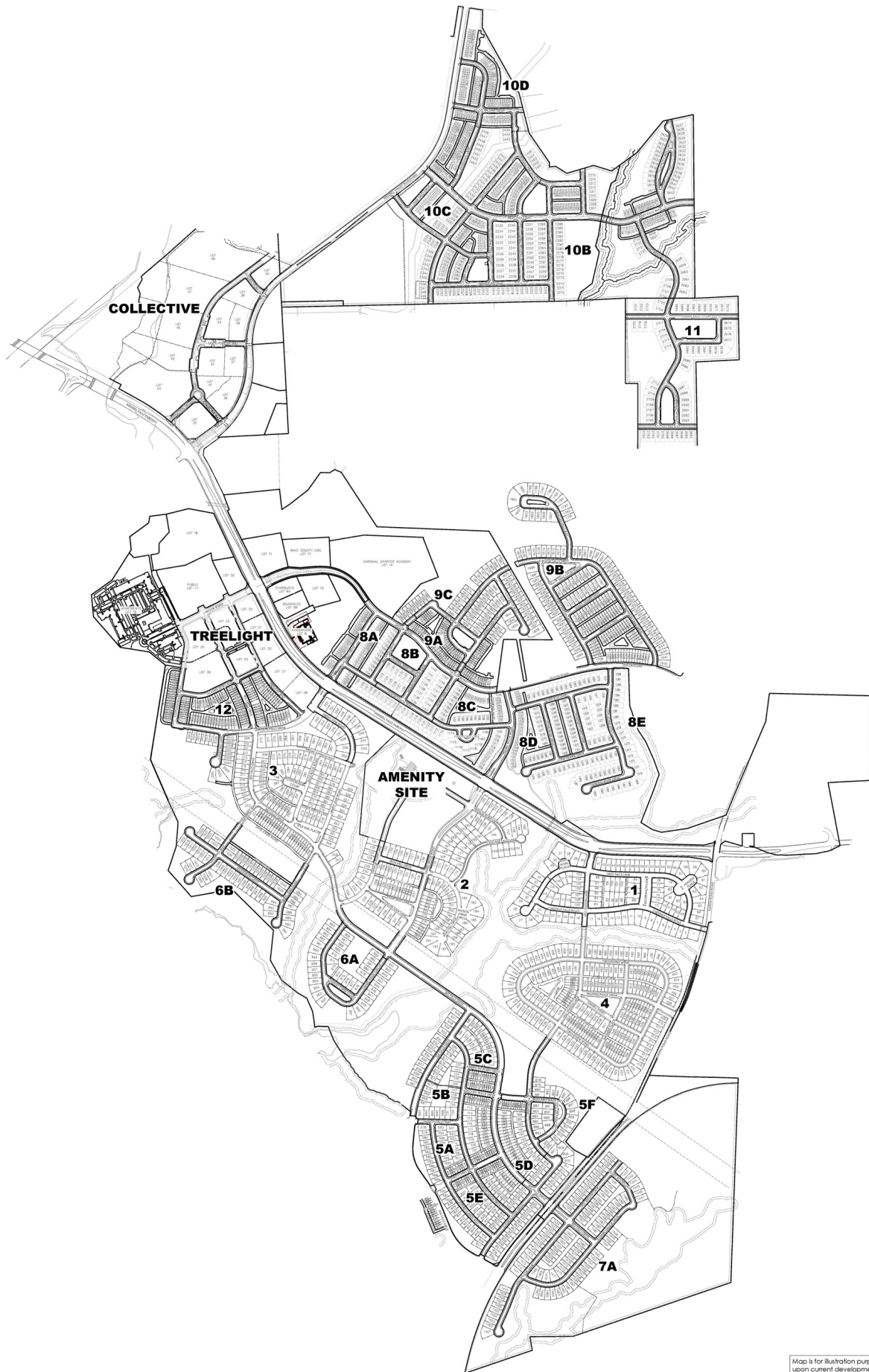
*as of 7/18/2022



Wendell Falls by Newland is owned in a joint venture partnership between North America Sekisui House, LLC (NASH) and Brookfield Residential, and is proudly managed by Brookfield Properties. These partners share a deep commitment to sustainable development practices and apply these core values to the vision, planning, and development of their communities. Wendell Falls by Newland is one of more than 20 communities this partnership manages together across the US. For more information, visit wendellfalls.com.

EQUAL HOUSING OPPORTUNITY. This is not intended to be an offer to sell nor a solicitation of offers to buy real estate in Wendell Falls to residents of Connecticut, Hawaii, Idaho, Illinois, New York, New Jersey, and Oregon, or in any other jurisdiction where prohibited by law. No guarantee can be made that development of the Wendell Falls Community ("Community") will proceed as described. Some properties being developed in the Community may only be in the formative stages and are not currently constructed, but are envisioned for the future. Any information on such properties is presented to set forth certain prospective developments for general informational purposes only. Newland Communities and North America Sekisui House (i) are not co-developing, co-building or otherwise responsible for any of the obligations or representations of any of the Builders, and (ii) shall have no obligations whatsoever to any buyer regarding a home purchase from a Builder. Buyers of homes from any of the Builders waive to the fullest extent permitted by law any and all claims against Newland Communities and/or North America Sekisui House arising out of their purchase transaction with a Builder. © 2022 Wendell Falls LLC. All Rights Reserved.

COMMUNITY MAP BY PHASE



Map is for illustration purposes only, based upon current development concepts, which are subject to change without notice. No guarantee can be made that development of the Wendell Falls Community ("Community") will proceed as described.